

PORSCHE

DRIVEN BY PRECISION.

POWERED BY MAGNETIC INSIGHT.

Porsche, the high-performance sports cars manufacturer, applies the SENIS Mapper for testing permanent magnet rotors of electromotors applied in Formula E racing cars.



PRECISE MAGNETIC FIELD MEASUREMENT

Accurate, repeatable, and high-resolution 3D mapping



BEST PERFORMING ROTORS SELECTED

Only rotors with the highest magnetic quality go on track



MOTOR POSITION VERIFICATION

Ensures precise alignment and optimal motor performance



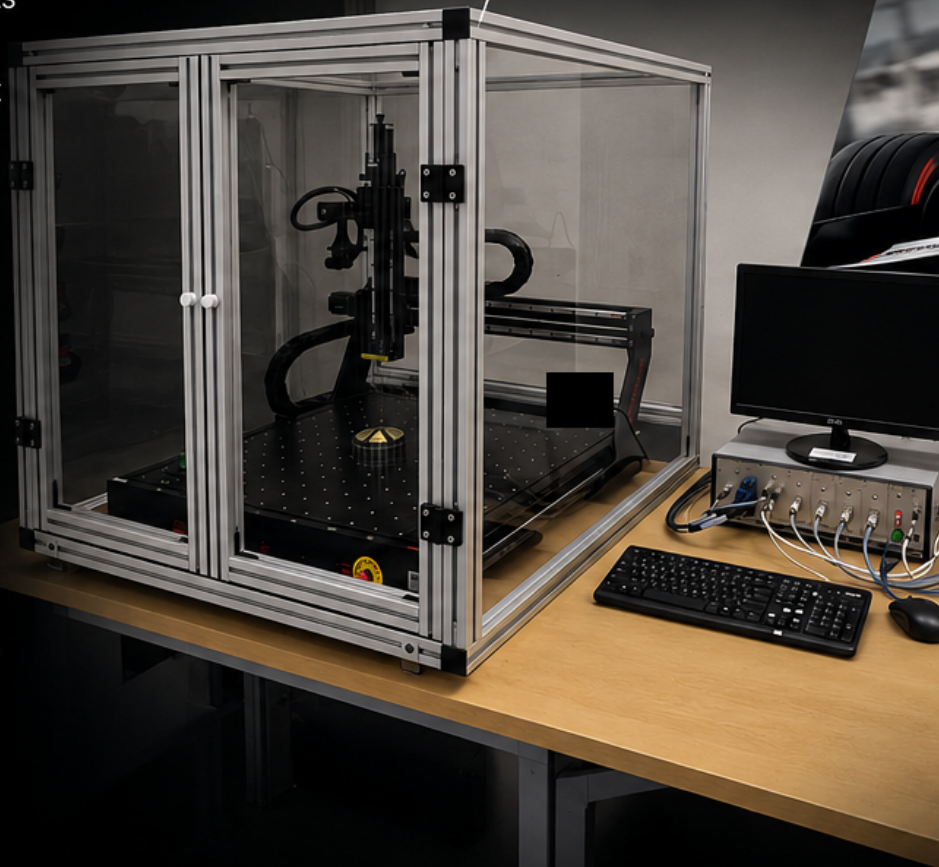
SIMULATION VALIDATION

Reliable data for model correlation and performance optimization

SENIS MAPPER

ACCURATE. RELIABLE. TRUSTED.

SENIS Mapper in
Porsche Electric Motor Lab



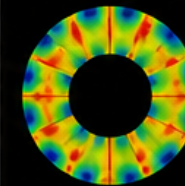
FORMULA E

RACING AT THE LIMIT.

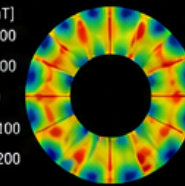


ROTORS TESTED. PERFORMANCE PROVEN.

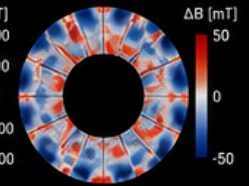
MEASURED FIELD MAP
(SENIS Mapper)



SIMULATION
(FEA MODEL)



MEASURED vs SIMULATION
(DIFFERENCE)



MATCH CONFIRMED

High correlation enables confident performance optimization.

“ Due to the accurate magnetic field measurement the best performed rotors are selected for Formula E. The **SENIS Mapper** is also used for motor position verification and further verifications for simulation purposes.

SENIS
magnetic solutions

MEASURE. UNDERSTAND. OPTIMIZE.