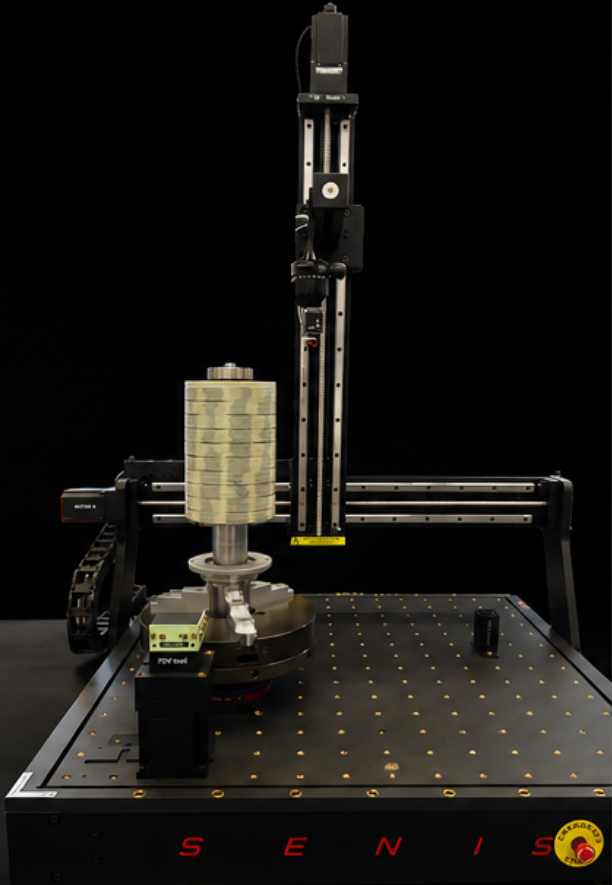


SENIS MAPPER

MEASURE. UNDERSTAND. OPTIMIZE.



MAGNETIC FIELD MAPPING

High-resolution 3D magnetic field measurement of rotors, stators and complete motor assemblies.



COMPLETE 3D
FIELD DATA



FAST &
ACCURATE



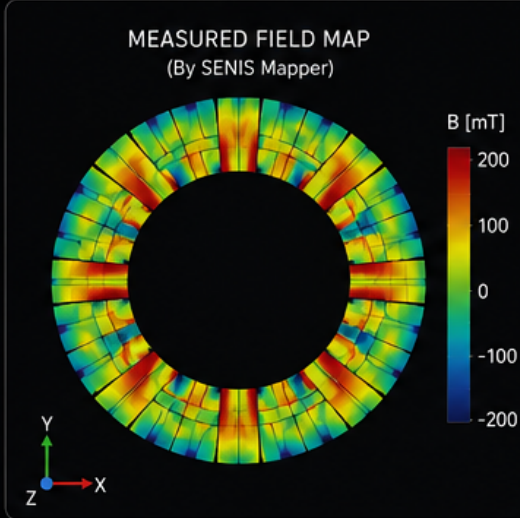
REPEATABLE &
TRACEABLE



INDUSTRY
PROVEN

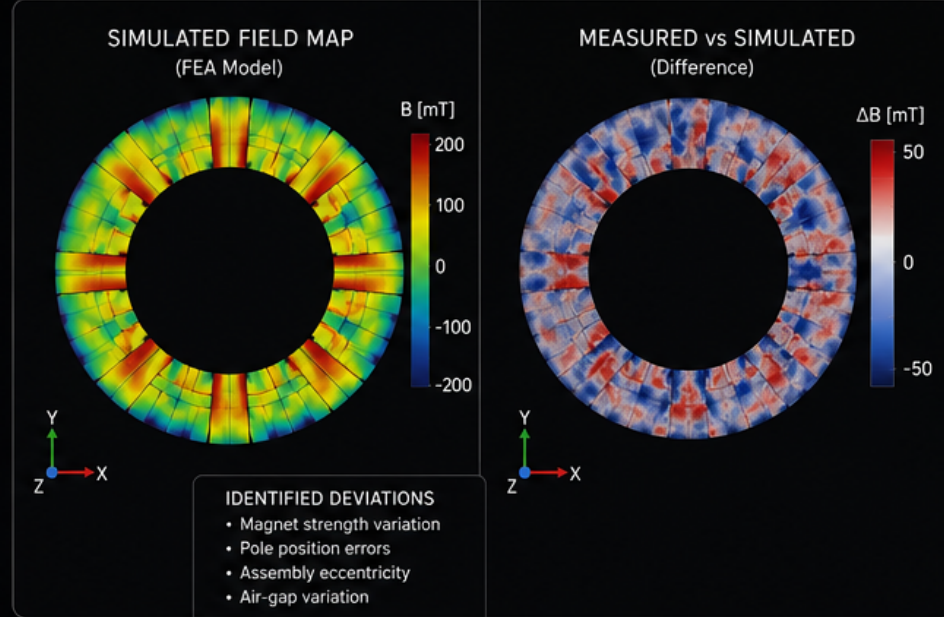
1. MEASURE

Map the real magnetic field



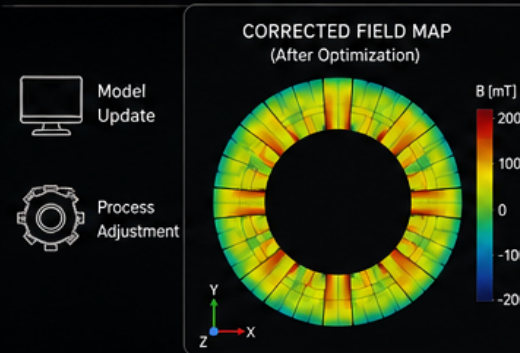
2. COMPARE

Compare measurement to simulation



3. CORRECT

Update design and process



FIELD MATCH WITH SIMULATION

High performance. Low torque ripple. Maximum efficiency.

4. APPLY

Reliable performance in the real world

The optimized motor delivers power, efficiency and reliability where it matters most.



APPLICATION

High-performance electric motor for aerospace helicopters

- ✓ High Power Density
- ✓ High Reliability
- ✓ Low Weight
- ✓ Maximum Efficiency

MEASURE IT. CORRECT IT. TRUST IT.

SENIS Mapper closes the loop between measurement and simulation, turning magnetic insight into real-world performance.

SENIS
magnetic solutions